

From Turkey to 120 Countries!

WHEEL LOADERS PRODUCT CATALOGUE 2024



Your global partner.

1 WHEEL LOADERS



Fimaks wheel loaders are designed to increase the productivity by reducing the needed labor and saving time in major livestock, agriculture, construction, landscape and municipal enterprises.

With an average fuel consumption of 2 to 3 liters per hour, Fimaks wheel loaders increase efficiency and profitability.

In addition to economy, tasks that are difficult to accomplish under normal conditions can be solved easily and quickly with Fimaks Loader, which makes it a star of your enterprise.





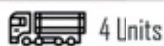
Model Name	LS33
Lifting Height	2600 mm
Lifting Capacity	800 kg
Engine Model	3 Cylinders Perkins
Engine Power	33 HP/25 kW
Speed	0-15 km/hour



Model Name	LS60
Lifting Height	2800 mm
Lifting Capacity	1500 kg
Engine Model	4 Cylinders Perkins
Engine Power	60 HP/44 kW
Speed	0-20 km/hour



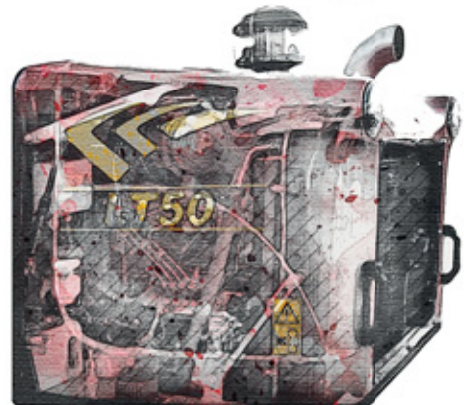
Model Name	LT60
Lifting Height	3600 mm
Lifting Capacity	1400 kg
Engine Model	4 Cylinders Perkins
Engine Power	60 HP/44 kW
Speed	0-20 km/hour



Model Name	LS50
Lifting Height	2800 mm
Lifting Capacity	1400 kg
Engine Model	4 Cylinders Perkins
Engine Power	50 HP/37 kW
Speed	0-20 km/hour



Model Name	LT50
Lifting Height	3600 mm
Lifting Capacity	1300 kg
Engine Model	4 Cylinders Perkins
Engine Power	50 HP/37 kW
Speed	0-20 km/hour



3/4 CYLINDERS PERKINS ENGINES INSIDE



3 WHEEL LOADER USAGE AREAS

AGRICULTURAL USAGE

- Lifting and carrying round and square bales
- Stacking of bales in high places
- Removal and relocation of additives and factory feed
- Lifting and carrying heavy weights
- Lifting and carrying pallets
- Silage tilling, silage cutting and silage plucking
- Arraying and refreshing the feed
- Removal, collection and relocation of manure
- Cleaning and removing garbage
- Drilling and digging holes
- Cleaning of work area from the snow



PUBLIC USAGE

- Road cleaning
- Cleaning of roadside signs
- Cleaning tasks
- Mowing of branches and lawns
- Pit and grave excavation
- Getting rid of weeds
- Tree planting
- Snow plowing
- Snow blowing
- Salt spreading



CONSTRUCTION USAGE

- Transportation of heavy construction materials
- Pit digging and hole drilling
- Transport of water and other fluids
- Relocating materials to higher places
- Debris removal after demolition
- Cleaning work areas
- Plowing of snow and soil in working areas



LANDSCAPING USAGE

- Pit and hole drilling
- Carrying heavy materials
- Loading and taking down heavy materials
- Cleaning and plowing work areas
- Transportation of difficult to transport materials
- Tree planting
- Getting rid of wild weeds



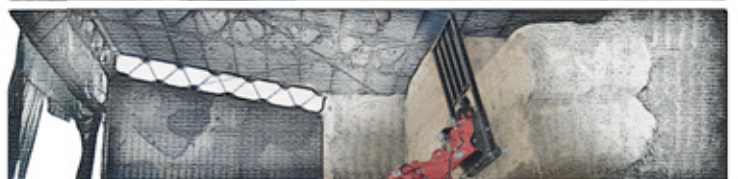
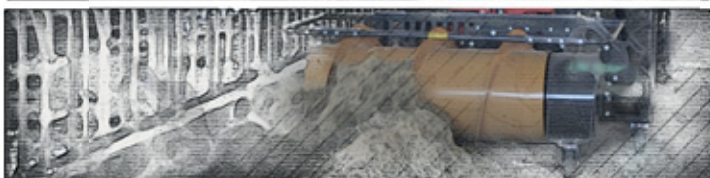
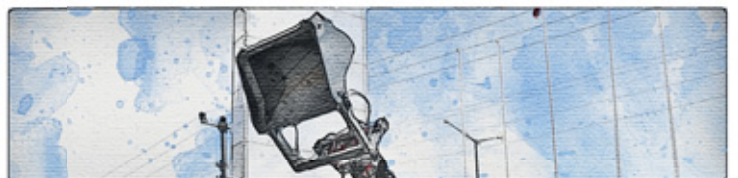
- 22 Different attachments
- Can be attached and de-attached in seconds
- 5 Different telescopic and standard models
- Hidrostatic 4WD with water cooled Perkins engines
- All-terrain tyres that are filled with water - glycol
- Optional cabin with heating, optional air conditioner
- Multi functional, easy to use joystick
- Adjustable seat and adjustable front console
- Hour counter, tachometer, working lights, security lights
- Fast hydraulic connection and Italian axles
- 2 Different gears, working and road
- Fuel, heat and operational indicators on front console
- Euro 5 engine



5 WHEEL LOADER ATTACHMENTS

There are 22 different attachments specially designed for **Fimaks** Wheel Loaders

- Bucket
- Square bale fork
- Bale grapple
- Pallet forks
- Silage tiller
- Silage cutter
- Feed refresher
- Silage and manure grapple
- Rubber scraper
- Hydraulic rubber scraper
- Extended bale fork (5.5 mt)
- Snow and soil plow
- Brush
- Sweeper
- Auger
- 4in1 bucket
- Backhoe
- Excavator
- Hydraulic discharge bucket
- Wood grapple
- Snow blower
- Salt spreader

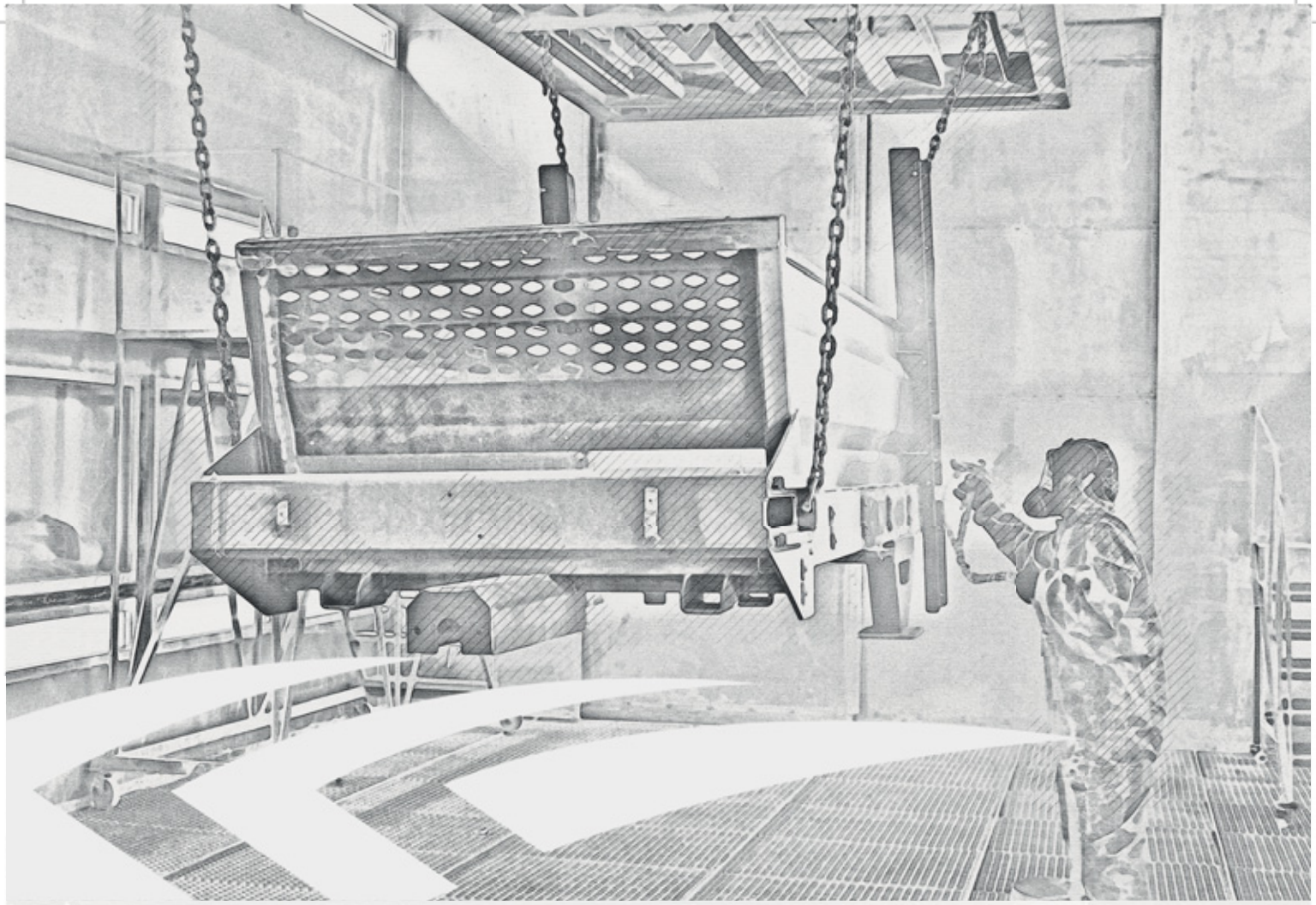




CHARACTERISTICS	UNIT	LS 33	LS 50	LT 50	LS 60	LT 60
ENGINE		3 cylinders	4 cylinders	4 cylinders	4 cylinders turbo	4 cylinders turbo
POWER	(hp/kW)	33/25	50/37	50/37	60/44	60/44
HEIGHT / HEIGHT WITH CABIN	(mm)	2400	2350 / 2560	2350 / 2560	2350 / 2560	2350 / 2560
LENGTH WITH STANDARD BUCKET	(mm)	4100	5000	5400	5000	5400
WIDTH	(mm)	1050	1570	1570	1570	1570
WEIGHT WITHOUT ACCESSORIES	(kg)	2500	3450	3600	3600	3750
MAX LIFTING HEIGHT	(mm)	2600	2800	3600	2800	3600
MAX LIFTING CAPACITY	(kg)	800	1400	1300	1500	1400
LIFTING CAPACITY AT MAX HEIGHT	(kg)	600	1300	1000	1400	1150
SPEED	(km/hour)	0-15	0-20	0-20	0-20	0-20
FUEL TANK	(liter)	35	55	55	55	55
OIL TANK	(liter)	35	50	50	50	50
TELESCOPIC ARM		-	-	included	-	included
TYRES		10.0/75 - 15	425/55-17	425/55-17	425/55-17	425/55-17

Fimaks follows an active R&D policy. Technical details, pictures, illustrations and information on this catalogue might change by time. Fimaks reserves the right to make changes without prior notice. Technical details might vary according to chosen optional features.





FIMAKS FACTORY

Organize Sanayi Bolgesi 5 No'lu Cad. No:2
16500 Mustafakemalpaşa / Bursa / TURKEY

www.fimaks.com
www.fimaksloader.com
export@fimaks.com



<https://www.instagram.com/fimaks/>



<https://www.linkedin.com/company/fimaks/>



<https://www.youtube.com/user/fimaksagricultural>



<https://www.facebook.com/fimaksmakina/>

DEALER INFO